

TIMS-4840-FP-E59R

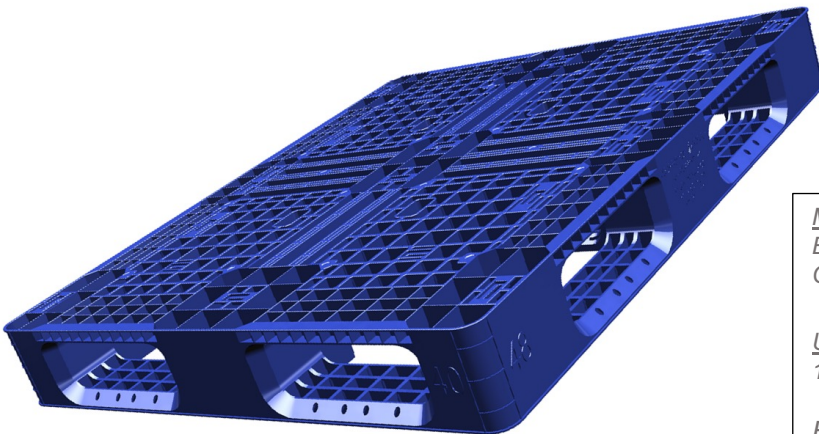
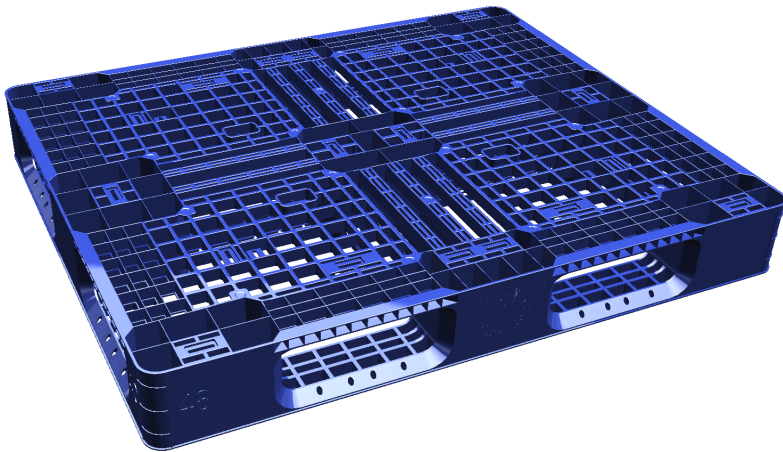
Technical Data

Dimensions Inches L48" x H40" x W5.9" (1219x1016x150mm)
Weight 24.0 lbs.

Load Capacities:

Static 7000 lbs.
Dynamic 3300 lbs.
Racking 2000 lbs.
Entry: 4 Way
Fork Opening 11" x 3.9" Inches
Truck Load: 510-540

Available in Truckload or LTL quantities. Minimum quantity required. We reserve the right to change any stated information without prior notice. Not responsible for typographical errors.



Material & Options

Material: HDPE & PP- Recycled or Virgin material
Multiple Engraving/Labeling Locations.

Option:

Custom Colors Available
Custom Logos
RFID Transponders Inserts
Private Label Available

Features

- High performance at low cost
- Open deck flow-thru design
- Double stacking
- Ideal for use in warehouse racking systems
- 4-way forklift access facilitates easy movement of product loads throughout a system
- Easy-to-clean hygienic design
- Suitable for packaged food items
- Impervious to acids, fats, solvents, and odors
- Inert to infestation, mold and mildew
- Consistently dimensionally accurate
- Exempt from ISPM 15 shipping regulations
- Significantly longer turns compared to wood pallets.

Manufactured in Juarez and Tijuana Mexico



Mexico

Blvd. Independencia 2151, Parque Salvarcar, Juarez
C. 9 Sur 1510, Cd Industrial, 22444 Tijuana

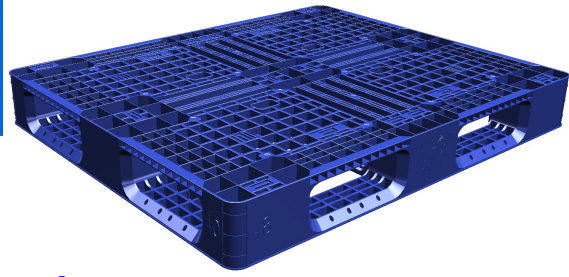
USA

1455 Vanderbilt Dr, El Paso, TX 79935

Email: plasticpallets@tekmartims.com

Specifications subject to change without notice.

Contents of this document are presented for general informational purposes only. Technical data are guideline values based on experience and tests under defined condition.



Pallet Dimensions In Detail

